

#DeliverWithEthics

BOBSBERG

INTELLI- BLANK

Advanced Offline Blanking Machine



www.bobsberg.com

Introduction

Who we are-

Sinhosun is an comprehensive company integrating machine design, machine production and trading since 1998, we focus on the field of post-press equipment over 20 years.

We provide industry-leading quality automation equipment for printing and packaging enterprises to improve their degree of automation, reducing manual work and increasing working efficiency.

Where we go-

Currently our post-press equipment are being widely embraced by customers across North and South America, Europe, Middle East, and Asia. We proudly serve over 300 customers in more than 50 countries, spanning the United States, Canada, United Kingdom, Germany, Spain, Netherlands, Greece, Poland, Italy, France, Russia, Mexico, Argentina, Brazil, Peru, Australia, Japan, Korea, Singapore, Malaysia, Indonesia, Thailand, Vietnam, India, Tunisia, Algeria, United Arab Emirates, Bahrain, Egypt, Saudi Arabia, etc.

What is our value-

To provide high-quality innovative equipment, to provide global customers best solutions. We consider our customers part of our family. Together, we drive growth, development, and mutual success through collaboration and progress at Sinhosun.

BOBSBERG



Factory / Headquarter



Stripping Blanking Machine Workshop



Gluing Machine Workshop



Multifunctional Folder Gluer With Inspection Workshop



Machine Showroom



Meeting Room

Application Scope

BOBSBERG

Our machines find extensive application across various industries, including packaging of pharmaceutical, food, cosmetic, cigarette, hang tag, electronics and other consumer products.



Food Packaging Box



Medicine Packaging Box



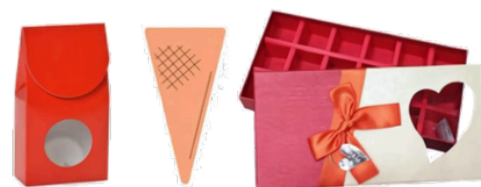
Tobacco Packaging Box



Cosmetic Packaging Box

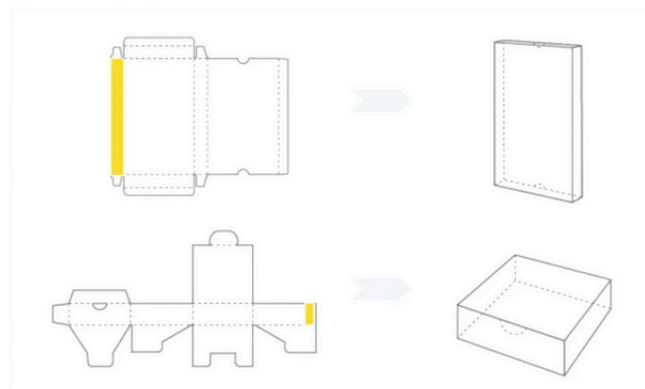


Hangtag / Label

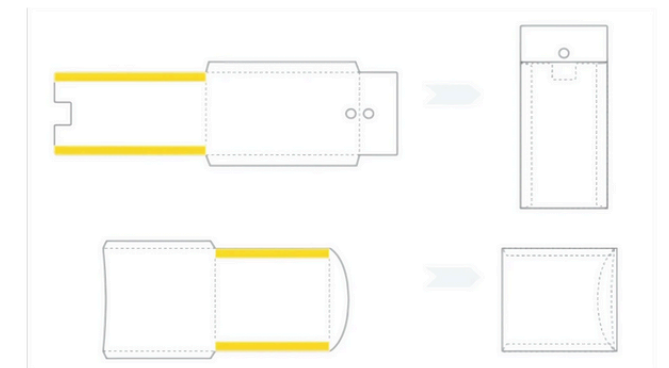


Consumer Packaging Box

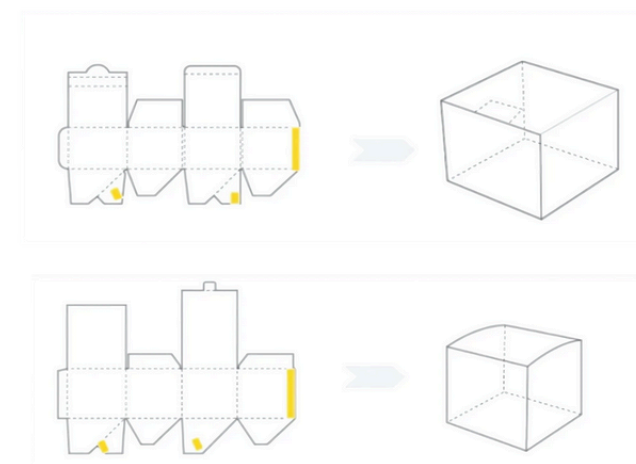
Linear / Striaight Line Box



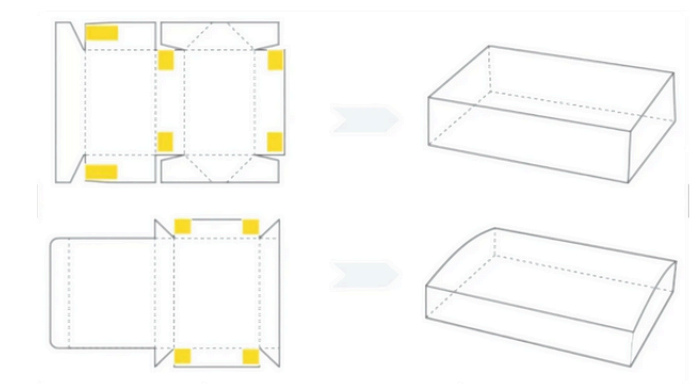
CD Box



Crash Lock Bottom Box

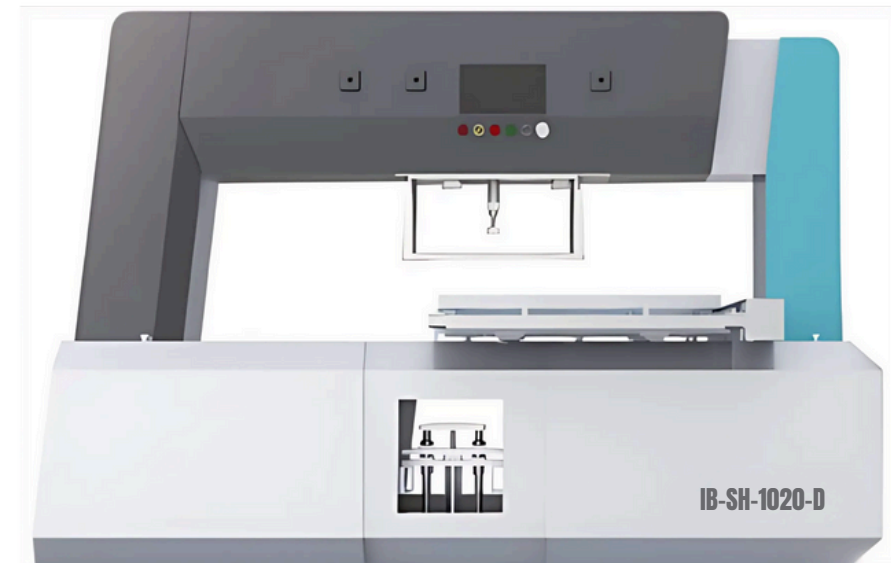


4/6 Corner Box





IB-SH-1020-S Double Heads Stripping Blanking Machine (Without Robotic Arms)



IB-SH-1020-D Single Head Stripping Blanking Machine (Without Robotic Arm)



IB-SH-1020-SJN Double Heads Stripping Blanking Machine with Robotic Arms & 90° Conveyor



IB-SH-1020-DJN Single Head Stripping Blanking Machine with Robotic Arm & 90° Conveyor

INTELLI-BLANK (SH-1020SJN)

Double Heads Stripping Blanking Machine with Robotic Arms & 90° Conveyor

- Efficiently removes waste paper after die-cutting, replacing manual stripping and blanking process to deliver higher-quality finished products.
- Handles paper piles with a thickness of 50–85mm per cycle, processing upto 8,000–10,000 sheets per hour
- Quick adaptability to new bottom molds, the entire changeover takes just 10–20 minutes.
- Only one person is required to operate the machine.



Saliant Features

Appearance-

- Based on the traditional pin type stripping machine in the market, our stripping machine have upgraded and it looks a little bit different.
- Finish in gantry-style design, integrate with best components for a grand structure and stable performance.



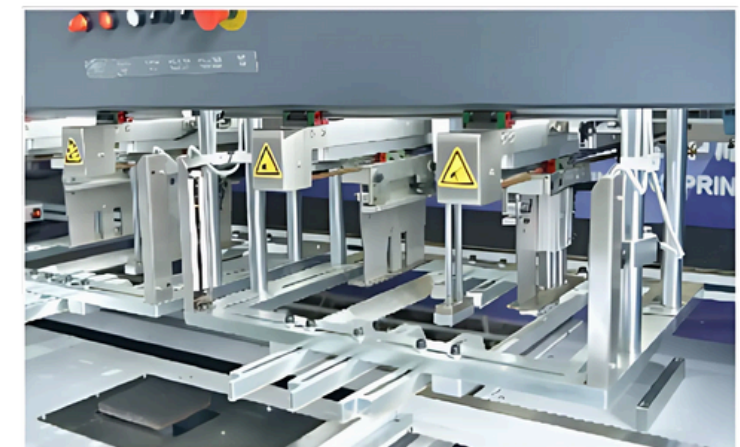
Paper Driving-

- Move by special paper driving section, paper sheet will not touch machine platform directly, protect product from getting dirty and damaged.
- Adopt high precision ball screw and linear guide rails for accurate positioning.
- Anti-collision Rubber Buffers on both side to secure safe production.



Double Blanking Stripping Heads-

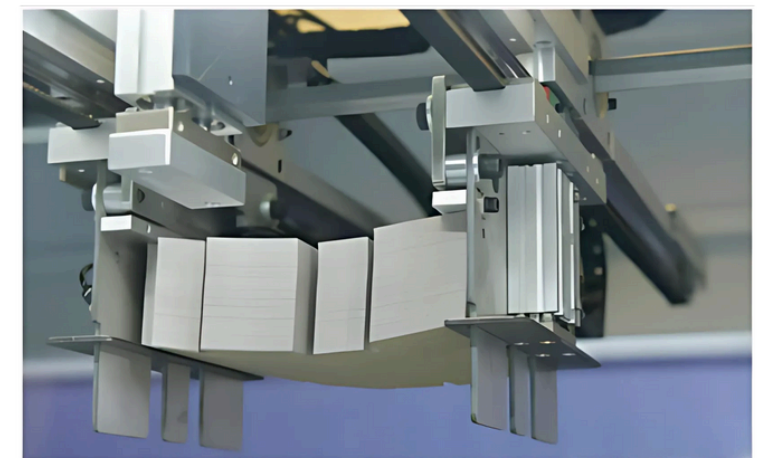
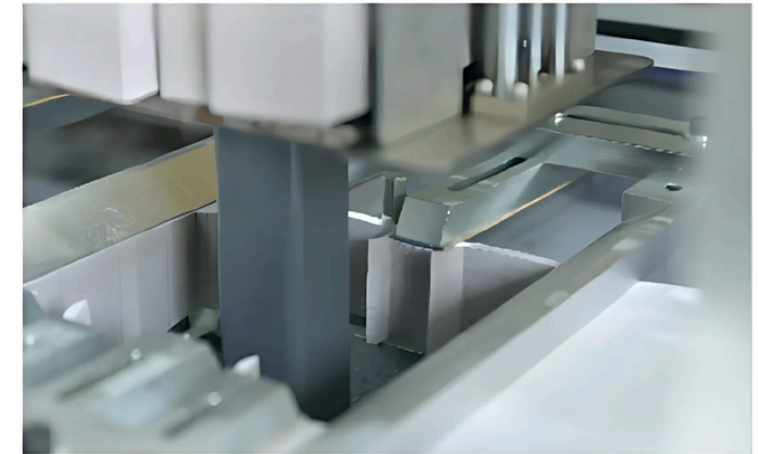
- Utilize double blanking stripping heads to achieve waste removal for different layouts.



Saliant Features

Module Stripping-

- Bottom mold for blanking and stripping replaces the traditional pin-type blanking stripping system.
- Takes around 30 seconds to replace the bottom mold, significantly reducing changeover time and improving blanking efficiency.
- Suitable for various blank sizes and product designs, such as lock-bottom boxes, paper cups, straight-line boxes, and specially shaped boxes.
- Robotic arms automatically clamp the finished products and deliver them to the conveyor belt, replacing manual receiving and improving production efficiency.
- Paper Collecting System neatly and orderly collects a whole row of products, enabling automatic collecting and palletizing.
- Optional Separation Paper to separate certain piles(depends on setting) to avoid finished pile fall down.



Saliant Features

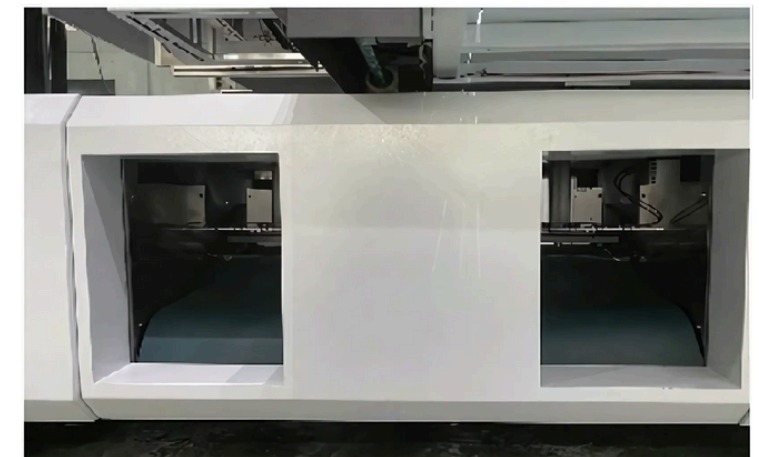
Operation System

- PLC control system, easy setting, user-friendly



Waste Discharge Channel

- Paper scraps will be discharged through the waste clearance channel automatically, protect product, save cleaning time and keep machine tidy.



Safety Detective Sensor

- Equipped with a detection sensor to prevent worker injuries and protect the machine from damage.



Technical Specifications

Model	SH-1020SJN	SH-1020SJN (Extended model)
Max. Paper Size /mm	1020 x 960	1060 x 960
	Can be extended to 1080*960	
Min. Paper Size /mm	300 x 300	300 x 300
Max. Mark Stripping Size /mm	450 x 350	650 x 500
Min. Mark Stripping Size /mm	30 x 30	100 x 100
Size of Robot Reclaimer /mm	80 x 80 – 350 x 350	100 x 100 – 480 x 380
The Paper Hight /mm	50-80	50-80
Mark Stripping Speed (Times/min)	1~18	1~18
Max. Working Pressure /T	2.5	2.5
Overall Power /KW	7	9
Pressure (Bar)	6~8	6~8
Overall Weight /Kg	2400	2700
Overall Dimension (LxHxW) /mm	4395 x 2000 x 2000	4765 x 2000 x 2000



Bobsberg India Pvt. Ltd.

A-25, Sector- Sigma 3, Greater Noida, UP, 201308

Tel: +91-8860698306, +91-7838037775

Email: info@bobsberg.com

www.bobsberg.com